



Chetwynd Close | Rugeley | WS15 1LU

£180,000

 **Webbs**  
estate agents



# Summary

Welcome to this charming semi-detached house located in the peaceful Chetwynd Close, Rugeley. This delightful property boasts three well-proportioned bedrooms, making it an ideal home for families or those seeking extra space.

As you enter, you are greeted by a welcoming entrance hallway that leads you into the heart of the home. The spacious lounge provides a comfortable area for relaxation and entertaining, while the kitchen offers a practical space for cooking and dining. The layout is designed to maximise both functionality and comfort, ensuring that every corner of the home is utilised effectively.

The property features a well-appointed bathroom, catering to the needs of the household with ease. Outside, you will find a lovely garden, perfect for enjoying the fresh air, gardening, or simply unwinding after a long day.

Situated in a quiet neighbourhood, this home offers a serene environment while still being conveniently close to local amenities, transport links and Cannock Chase. Whether you are looking to settle down or invest, this property presents a wonderful opportunity to create lasting memories in a welcoming community. Do not miss the chance to make this house your home.

# Key Features

- SEMI DETACHED
- LOUNGE
- CLOSE TO CANNOCK CHASE
- CLOSE TO LOCAL AMENITIES
- THREE BEDROOMS
- KITCHEN
- IDEAL FIRST TIME BUY

# Rooms and Dimensions

## Entrance Hallway

## Lounge

9'7" x 19'5" (2.94 x 5.94)

## Kitchen

9'2" x 16'11" (2.80 x 5.17)

## Landing

## Bedroom One

9'10" x 13'7" (3.00 x 4.16)

## Bedroom Two

12'5" x 5'9" (3.79 x 1.76)

## Bedroom Three

6'0" x 10'6" (1.84 x 3.22)

## Bathroom

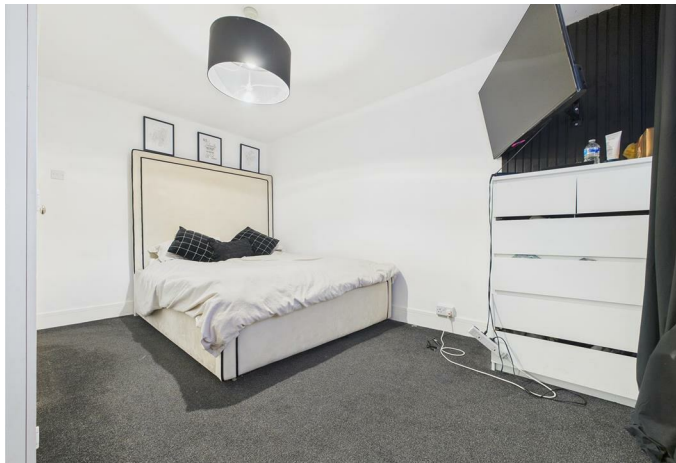
6'6" x 5'8" (2.00 x 1.73)

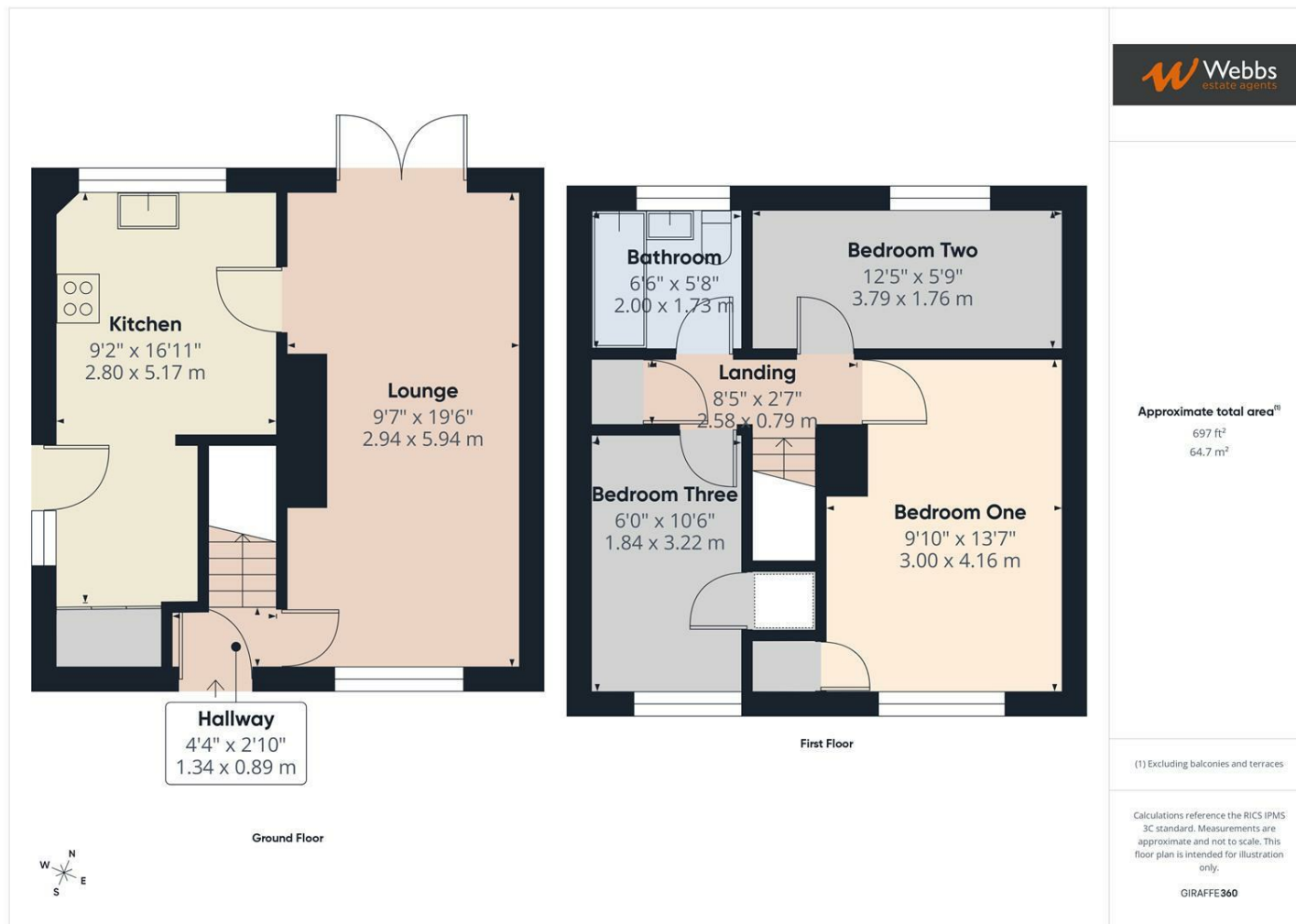
## Front & Rear Gardens

## IDENTIFICATION CHECKS - C

## Agents Notes







Webbs Estate Agents - endeavour to maintain accurate depictions of properties in Virtual Tours, Floor Plans and descriptions, however, these are intended only as a guide and purchasers must satisfy themselves by personal inspection.

